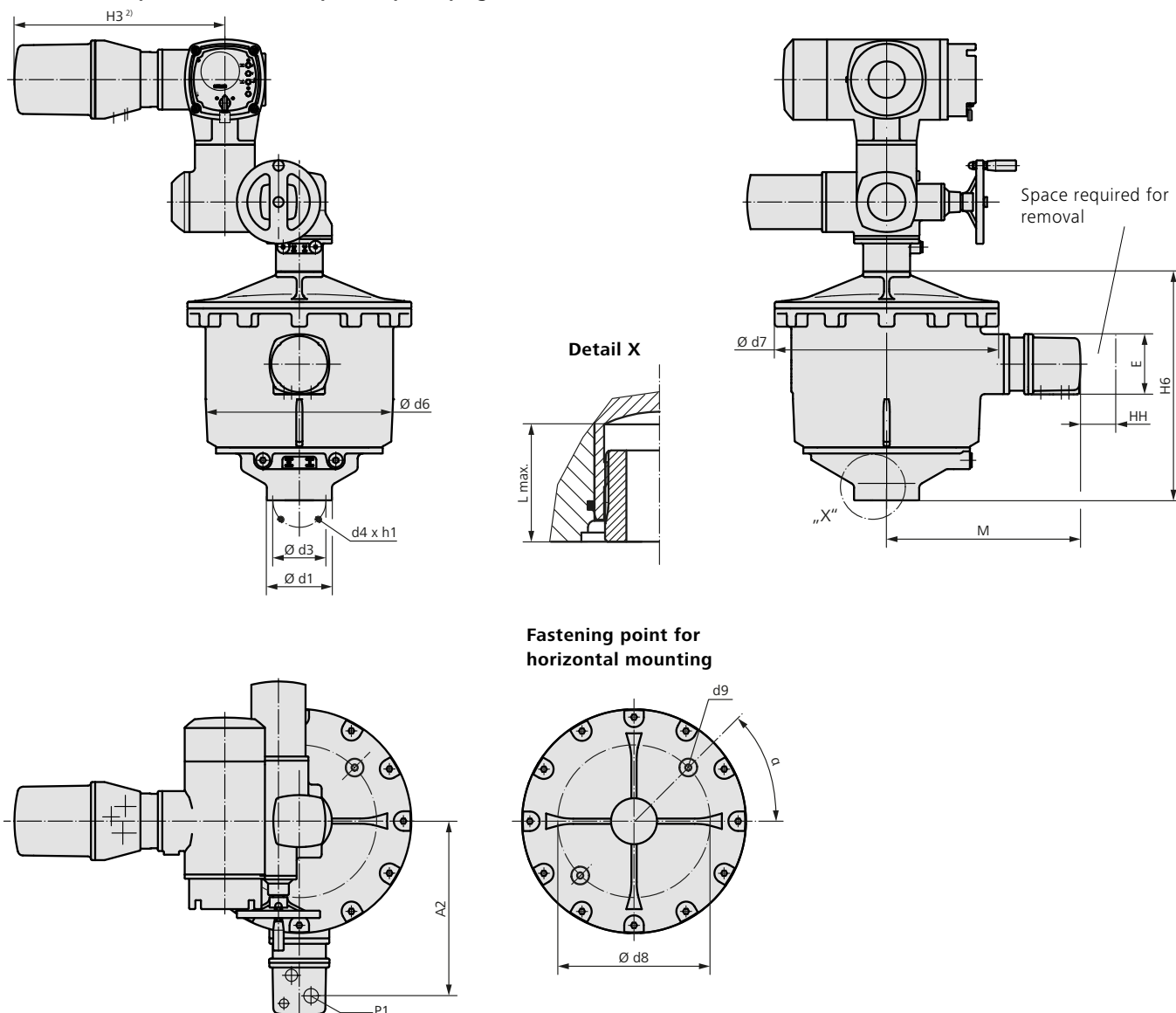


FQMEEx 05.1 – FQMEEx 12.1
SQEx 05.2 – SQEx 12.2 mit ACExC 01.2

Dimensions Fail safe unit

With AUMA 3-phase motor and explosion-proof plug/socket connector



- 1) Flange for mounting part-turn actuator
- 2) Standard: Ex plug/socket connector with terminal blocks. Exact dimension depending on electrical connection used
- 3) Combined flange F07/F10

Output drives acc. to EN ISO 5211
For dimensions see overleaf

For all other dimensions, please refer to "Dimensions Part-turn actuators"

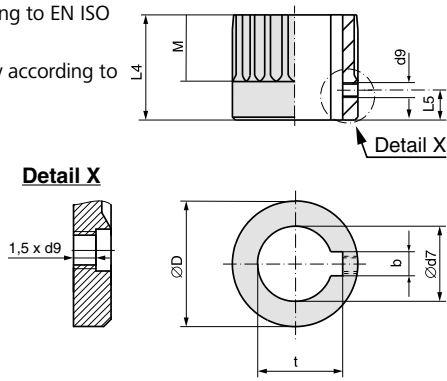
Dimensions	FQMEEx 05.1/FQMEEx 07.1		FQMEEx 10.1		FQMEEx 12.1		
	SQEx 05.2/SQEx 07.2		SQEx 10.2		SQEx 12.2		
Part-turn actuator	SQEx 05.2/SQEx 07.2		SQEx 10.2		SQEx 12.2		
EN ISO 5211	F07 ³⁾	F10 ³⁾	F10	F12	F12	F14	F16
A2	336		351		351		
E	115		115		115		
H3 ²⁾	404		404		404		
H6	439		606	566	566	606	616
HH min.	60		60		60		
M	372		387		387		
L max.	45		100	60	60	100	110
P1	M20 x 1.5		M20 x 1.5		M20 x 1.5		
Ø d1	125	125	125	150	150	175	210
Ø d3	70	102	102	125	125	140	165
d4	4 x M8	4 x M10	4 x M10	4 x M12	4 x M12	4 x M16	4 x M20
Ø d6	360		474		474		
Ø d7	430		550		550		
Ø d8	260		350		350		
d9	M10		M12		M12		
h1	15	16	18	21	21	25	32
α	45°		45°		45°		
EN ISO 5211 ¹⁾	F07		F12		F12		

We reserve the right to alter data according to improvements made. Previous documents become invalid with the issue of this document.

FQMEx 05.1 – FQMEx 12.1
SQEx 05.2 – SQEx 12.2 mit ACExC 01.2

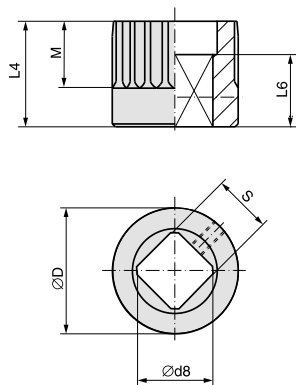
Dimensions Couplings according to EN ISO 5211

Bore according to EN ISO 5211
 With keyway according to DIN 6885-1



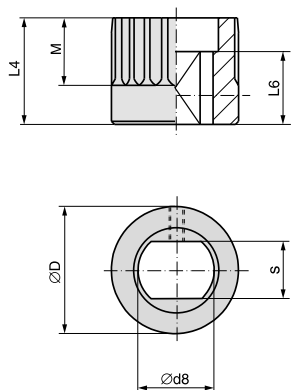
Dimensions	FQMEx 05.1/FQMEx 07.1		FQMEx 10.1		FQMEx 12.1		
	F07	F10	F10	F12	F12	F14	F16
Ø D	41.75		67.6		67.6		
b JS9 ¹⁾	6		10		10		
Ø d7 H8 ²⁾	22		36		36		
Ø d7 max.	25.4		50		50		
d9 ³⁾	M5		M6		M6		
L4	35		95	55	55	95	105
L5 ³⁾	8		10		10		
M	20		40		40		
t ¹⁾	24.8		39.3		39.3		

Square bore
 According to EN ISO 5211



Dimensions	FQMEx 05.1/FQMEx 07.1		FQMEx 10.1		FQMEx 12.1		
	F07	F10	F10	F12	F12	F14	F16
Ø D	41.75		67.6		67.6		
Ø d8 min. ²⁾	22.2		36.2		36.2		
Ø d8 max.	28.2		48.2		48.2		
L4	35		95	55	55	95	105
L6 min.	30		30		30		
M	20		40		40		
s H11 ²⁾	17		27		27		
s H11 max.	22		36		36		

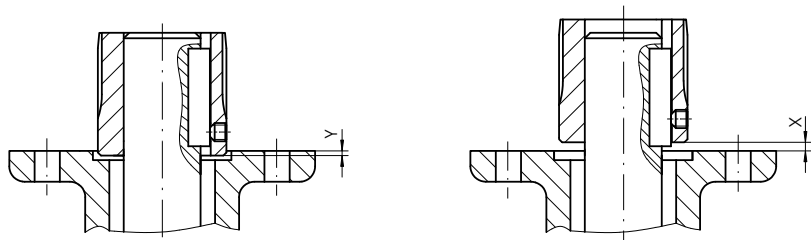
Bore with two-flats
 According to EN ISO 5211



Dimensions	FQMEx 05.1/FQMEx 07.1		FQMEx 10.1		FQMEx 12.1		
	F07	F10	F10	F12	F12	F14	F16
Ø D	41.75		67.6		67.6		
Ø d8 min. ²⁾	22.2		36.2		36.2		
Ø d8 max.	28.2		48.2 (48 ⁴⁾)		48.2 (48 ⁴⁾)		
L4	35		95	55	55	95	105
L6 min.	25		30		30		
M	20		40		40		
s H11 ²⁾	17		27		27		
s H11 max.	22		36 (41 ⁴⁾)		36 (41 ⁴⁾)		

Mounting position of coupling

X max.	5	6	6
Y max.	5	10	10



1) Dimensions depend on Ø d7, refer to DIN 6885-1
 2) Recommended size according to EN ISO 5211
 3) Thread with grub screw
 4) According to DIN 475