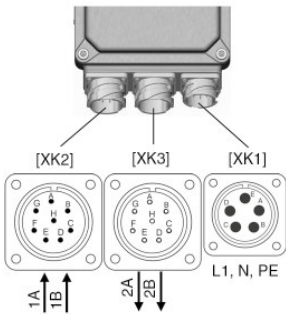
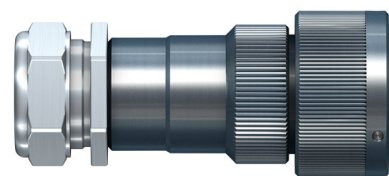


| Canon ITT Connector complying with ROHS (A240) | Power connector (XK1) | | Fieldbus connector | |
|---|--|--------|--------------------|---------------|
| | | | BUS IN (XK2) | BUS OUT (XK3) |
| Type (cable sealing) | IN LINE | PG | IN LINE | IN LINE |
| Connection voltage max. (actuator values) | 500 V (230 V) | | 50 V | |
| Max. current (actuator values) | 41 A (6 A) | | 22 A | |
| Number of pin contacts | 5 | | 8 | 8 |
| Pin contact design | Sockets | | Sockets | Pins |
| Wire connection to pin contacts | Crimping | | | |
| Pin contact material | Brass/gold | | | |
| Cable diameter | See table below | | | |
| Connections at actuator |  | | | |
| | | | | |
| | For individual pin assignment refer to actuator wiring diagram. | | | |
| Connector lock nut | Bayonet | | | |
| Fitting dimensions of complete connector | Max. length: | | Max. length: | |
| | 92 mm | 102 mm | 92 mm | 92 mm |

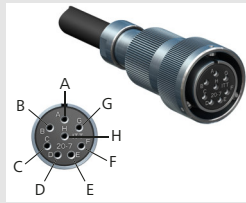
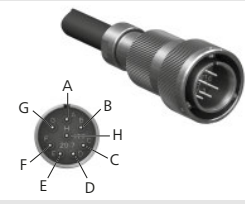
IN LINE



PG



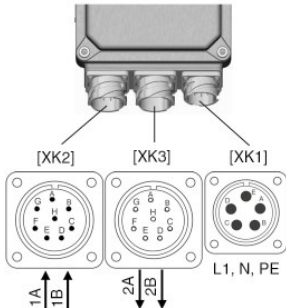
Pin contact assignment

| Plug/socket connector | Pin | Assignment ¹⁾ | Colour |
|--|-------------------|--------------------------|--------|
| BUS IN (XK2)  | A | 1 A | Green |
| | B | 1 B | Red |
| | E ⚡ ²⁾ | | |
| | Screw connection | Shield | |
| BUS OUT (XK3)  | A | 2 A | Green |
| | B | 2 B | Red |
| | E ⚡ ²⁾ | | |
| | Screw connection | Shield | |

Notes on table

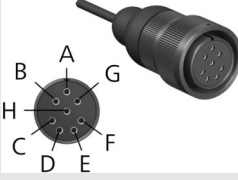
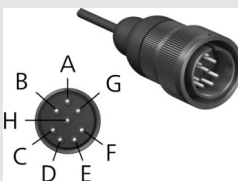
- | | |
|-----------------------|---|
| 1) Assignment | Refer also to actuator wiring diagram. |
| 2) Earthing conductor | As an option, pin E can be connected to the shielding. This is, however, not recommended. |

| | Ø cable | Component | Ø wires | AUMA article number | Units |
|------------------|----------------|-----------------------------------|------------------------|---------------------|--------|
| Power connectors | 8.0 – 10.3 mm | IN LINE (D11) connector incl. pin | 0.75 – 1.5 mm² | K011.165 | compl. |
| | 9.0 – 12.5 mm | IN LINE (D13) connector incl. pin | 0.75 – 1.5 mm² | K011.748 | compl. |
| | 13 – 18 mm | PG connector incl. pin | up to 2.5 mm² | K011.706 | compl. |
| BUS IN + BUS OUT | 8.0 – 10.3 mm | IN LINE (D11) connector incl. pin | 0.3 – 0.6 mm² (2 pcs) | Z126.358 | compl. |
| | | | 0.75 – 1.5 mm² (6 pcs) | | |
| | 11.5 – 14.2 mm | IN LINE (D14) connector incl. pin | 0.3 – 0.6 mm² (2 pcs) | Z126.359 | compl. |
| | | | 0.75 – 1.5 mm² (6 pcs) | | |

| Canon ITT connector | Power connector (XK1) | Fieldbus connector | |
|---|--|-----------------------|---------------|
| | | BUS IN (XK2) | BUS OUT (XK3) |
| Connection voltage max. (actuator values) | 500 V (230 V) | 50 V | |
| Max. current (actuator values) | 41 A (6 A) | 22 A | |
| Number of pin contacts | 5 | 8 | 8 |
| Pin contact design | Sockets | Sockets | Pins |
| Wire connection to pin contacts | Crimping | | |
| Pin contact material | Brass/gold | | |
| Cable diameter | 7 – 10.5 mm with rubber seal | 18.5 mm ¹⁾ | |
| Connections at actuator | <div></div> | | |
| For individual pin assignment refer to actuator wiring diagram. | | | |
| Connector lock nut | Bayonet | | |
| Fitting dimensions of complete connector | Max. diameter 36.5 mm | Max. diameter 40 mm | |
| | Max. length <ul style="list-style-type: none">67 mm (without screen)90 mm (with screen) | Max. length 70 mm | |



Pin contact assignment

| Plug/socket connector | Pin | Assignment ²⁾ | Colour |
|--|-------------------|--------------------------|--------|
| BUS IN (XK2)  | A | 1 A | Green |
| | B | 1B | Red |
| | E ⚡ ³⁾ | | |
| | Screw connection | Shield | |
| BUS OUT (XK3)  | A | 2 A | Green |
| | B | 2B | Red |
| | E ⚡ ³⁾ | | |
| | Screw connection | Shield | |

Notes on table

| | |
|-----------------------|--|
| 1) Cable diameter | No rubber seal included. For tight sealing, 18.5 mm have to be completely filled, either with the cable or with an additional coating. |
| 2) Assignment | Refer also to actuator wiring diagram. |
| 3) Earthing conductor | As an option, pin E can be connected to the shielding. This is, however, not recommended. |

| | Component | Ø wires | AUMA article number | Units |
|------------------|--|----------------------------|------------------------|--------|
| Power connectors | Connector without screen incl. pins size 12 | 0.75 – 1.5 mm ² | Z113.088 | compl. |
| | Connector with screen incl. pins size 12 | 0.75 – 1.5 mm ² | K009.945 | compl. |
| BUS IN | Housing | – | K007.665 | 1 |
| | Pin (0.3 – 0.6) size 16 | 0.3 – 0.6 mm ² | K005.147 | 2 |
| | Pin (0.75 – 1.5) size 16 | 0.75 – 1.5 mm ² | K007.342 | 6 |
| | Heat shrink sleeve | – | K006.954 | 1 |
| BUS OUT | Housing | – | K007.666 | 1 |
| | Pin (0.3 – 0.6) size 16 | 0.3 – 0.6 mm ² | K002.587 | 2 |
| | Pin (0.75 – 1.5) size 16 | 0.75 – 1.5 mm ² | K007.667 | 6 |
| | Heat shrink sleeve | – | K006.954 | 1 |

Connecting cables and wires to the connector

| | |
|------------------------|---|
| Operation instructions | Connecting the cable including crimping and inserting the pin contacts is described in the ITT Cannon operation instructions. Short instructions are included with the connectors. For more detailed descriptions, refer to the manufacturer. |
|------------------------|---|

| | |
|---------------|--|
| Special tools | The following special tools by ITT Cannon are required for crimping and inserting the pin contacts. These tools can either be ordered from the manufacturer or leased from AUMA. |
|---------------|--|

| | |
|--|--|
| Crimping pliers (for signal and power connectors) | |
|--|--|



| | |
|-------------------------|---|
| Cannon ITT designation: | M22520-1/01: Hand crimp tool for pins of sizes 10, 12, 16, 16S (0.75 – 6.0 mm²) |
|-------------------------|---|

| | |
|----------------------|----------|
| AUMA article number: | K009.855 |
|----------------------|----------|



| | |
|-------------------------|---|
| Cannon ITT designation: | TH 452: Turret head for hand crimp tool, pins of sizes (12, 15, 15S, 16, 16S) |
|-------------------------|---|

| | |
|----------------------|----------|
| AUMA article number: | K009.856 |
|----------------------|----------|



| | |
|-------------------------|--|
| Cannon ITT designation: | CCT-CGF-E: Hand crimp tool for grounding contacts (0.75 – 6.0 mm²) for power plug. |
|-------------------------|--|

| | |
|----------------------|----------|
| AUMA article number: | K009.876 |
|----------------------|----------|

| | |
|--|--|
| Insertion tool for pin contacts (for signal and power connectors) | |
|--|--|



| | |
|-------------------------|---|
| Cannon ITT designation: | CIT-F80-12: Insertion tool for inserting size 12 pin contacts |
|-------------------------|---|

| | |
|----------------------|----------|
| AUMA article number: | K009.877 |
|----------------------|----------|



| | |
|-------------------------|--|
| Cannon ITT designation: | Guide pin for insertion of socket contacts in the holes of the plastic body: |
|-------------------------|--|

| | |
|--|---|
| | For socket contacts size 12: 27977-12T8 |
|--|---|

| | |
|--|--|
| | For socket contacts size 16: 27977-16T50 |
|--|--|

Ejection tool for pin contacts
(for signal and power connectors)



| | |
|-------------------------|--|
| Cannon ITT designation: | CET-F80-12: Extraction tool for size 12 pins |
| AUMA article number: | K009.878 |

Accessories

Angle adapters

| Use | AUMA article number | Surface |
|--------------------------------|---------------------|-----------------------|
| For signal connectors | Z101.862 | A66 |
| | Z127.404 | A240 (ROHS compliant) |
| For signal/fieldbus connectors | Z105.626 | A66 |
| | Z127.405 | A240 (ROHS compliant) |



Z101.862-0



Z101.626-0

Angle adapters can be used to deflect cable-connector arrangement by 70° from the output drive or the valve.
Retrofit kit for 90° angle at the actuator for fieldbus connection Z105.759