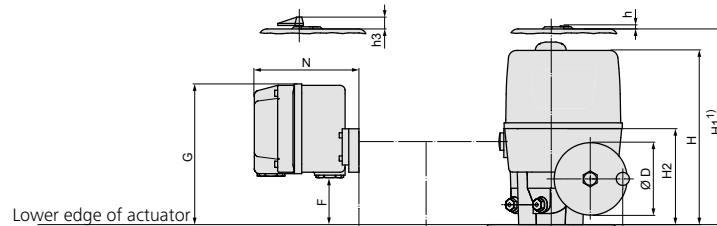
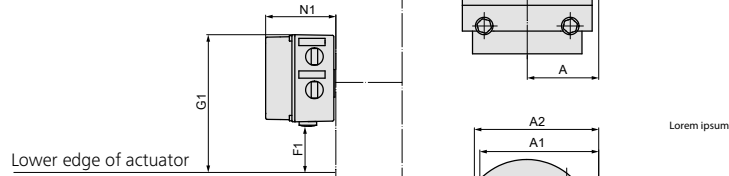


Dimensions Part-turn actuators

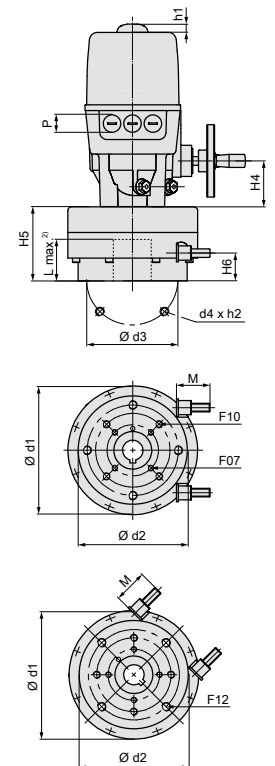
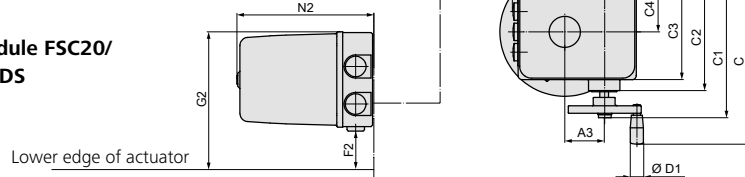
Option:
KS1 compact connector



Option:
Local controls VSE



Option:
Emergency operation module FSC20/
transformer housing PEL-DS



Output drives according to EN ISO 5211
Dimensions of couplings see overleaf

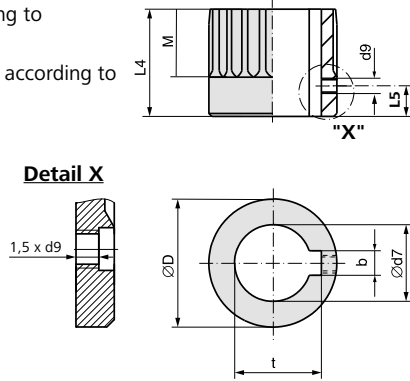
- 1) Dimensions for actuator with aluminium hood
- 2) Max. fitting dimension

Dimensions	EQ 300 – EQ 600			
	EN ISO 5211	F07	F10	F12
A			98	
A1			162	
A2			169	
A3			54	
C			220	
C1			183	
C2			146	
C3			131	
C4			65	
Ø D			100	
Ø D1			18	
F			65	
F1			53	
F2			64	
G			194	
G1			180	
G2			201	
H			246	
H1 ¹⁾			274	
H2			133	
H4			63	
H5			103	
H6			38.5	
L max. ²⁾			50	
M		min. -3 (~ -15°)	Standard 12 (~ 90°)	max. 27 (~ +15°)
N			144	
N1			96	
N2			188	
P			3 x M20 x 1.5	
Ø d1			178	
Ø d2			150	
Ø d3		70	102	125
Ø d4		4 x M8	4 x M10	4 x M12
h			4	
h1			12	
h2		12	15	20
h3			21	

We reserve the right to alter data according to improvements made. Previous documents become invalid with the issue of this document.

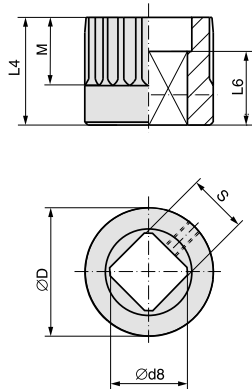
Dimensions Couplings according to EN ISO 5211

Bore according to
EN ISO 5211
With keyway according to
DIN 6885-1



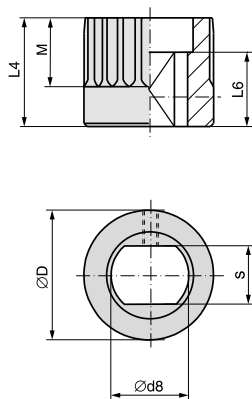
Dimensions	EQ 300/EQ 600		
	F07	F10	F12
EN ISO 5211	F07	F10	F12
Ø D	51.75		
b JS9 ¹⁾	nach DIN 6885-1		
Ø d7 max.	38		
d9 ²⁾	M6		
L4	45		
L5 ²⁾	10		
M	30		
t ¹⁾	nach DIN 6885-1		

Square bore
according to EN ISO 5211



Dimensions	EQ 300/EQ 600		
	F07	F10	F12
EN ISO 5211	F07	F10	F12
Ø D	51.75		
Ø d8 max.	40.2 ³⁾		
L4	45		
L6 min.	30		
M	30		
s H11 max.	30 ³⁾		

Bore with two-flats
according to EN ISO 5211



Dimensions	EQ 300/EQ 600		
	F07	F10	F12
EN ISO 5211	F07	F10	F12
Ø D	51.75		
Ø d8 max.	36.2		
L4	45		
L6 min.	25		
M	30		
s H11 max.	27		

1) Dimensions depend on Ø d7, refer to DIN 6885-1

2) Thread with grub screw

3) According to DIN 79