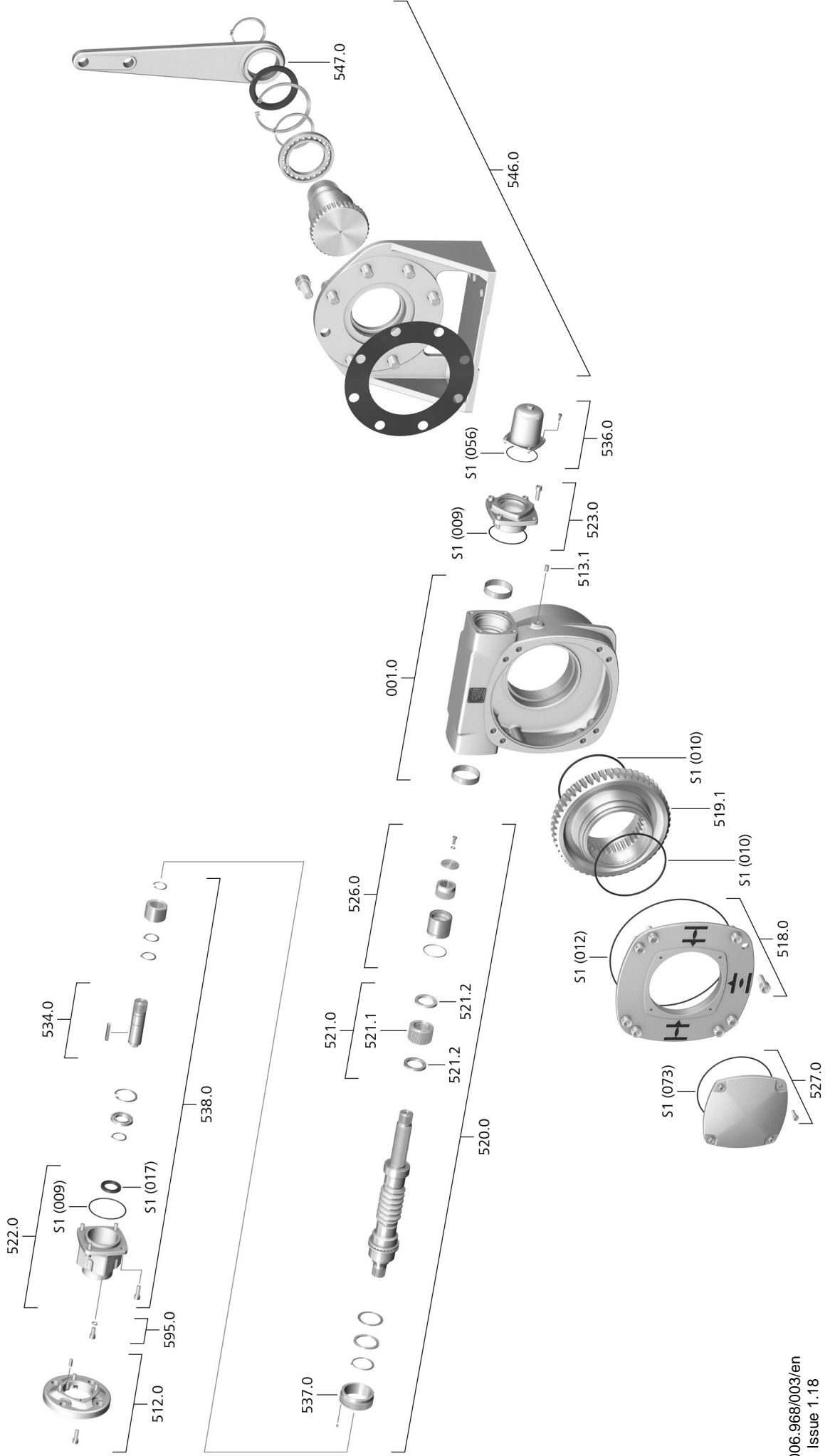


Spare parts list  
**auma**<sup>®</sup>  
 Part-turn gearboxes  
 GS 160.3 – GS 250.3  
 with base and lever



## Spare parts list Part-turn gearboxes with base and lever

Please state device type and our order number (see name plate) when ordering spare parts. Only original AUMA spare parts should be used. Failure to use original spare parts voids the warranty and exempts AUMA from any liability. Representation of spare parts may slightly vary from actual delivery.

Ref. no.	Designation	Type
001.0	Housing	Sub-assembly
512.0	Input mounting flange	Sub-assembly
513.1	Grub screw	
518.0	Housing cover	Sub-assembly
519.1	Worm wheel	
520.0	Worm shaft	Sub-assembly
521.0	Travelling nut with two pairs of safety wedge discs	Sub-assembly
521.1	Travelling nut	
521.2	Pair of safety wedge discs	
522.0	Bearing cover	Sub-assembly
523.0	End stop	Sub-assembly
526.0	End stop nut	Sub-assembly
527.0	Protection cover	Sub-assembly
534.0	Drive shaft	Sub-assembly
536.0	Protective cap	Sub-assembly
537.0	Lock nut	Sub-assembly
538.0	Bearing cover with drive shaft	Sub-assembly
546.0	Base flange	Sub-assembly
547.0	Swing lever	
595.0	Screw kit for manual gearbox	Sub-assembly
S1	Seal kit	Set