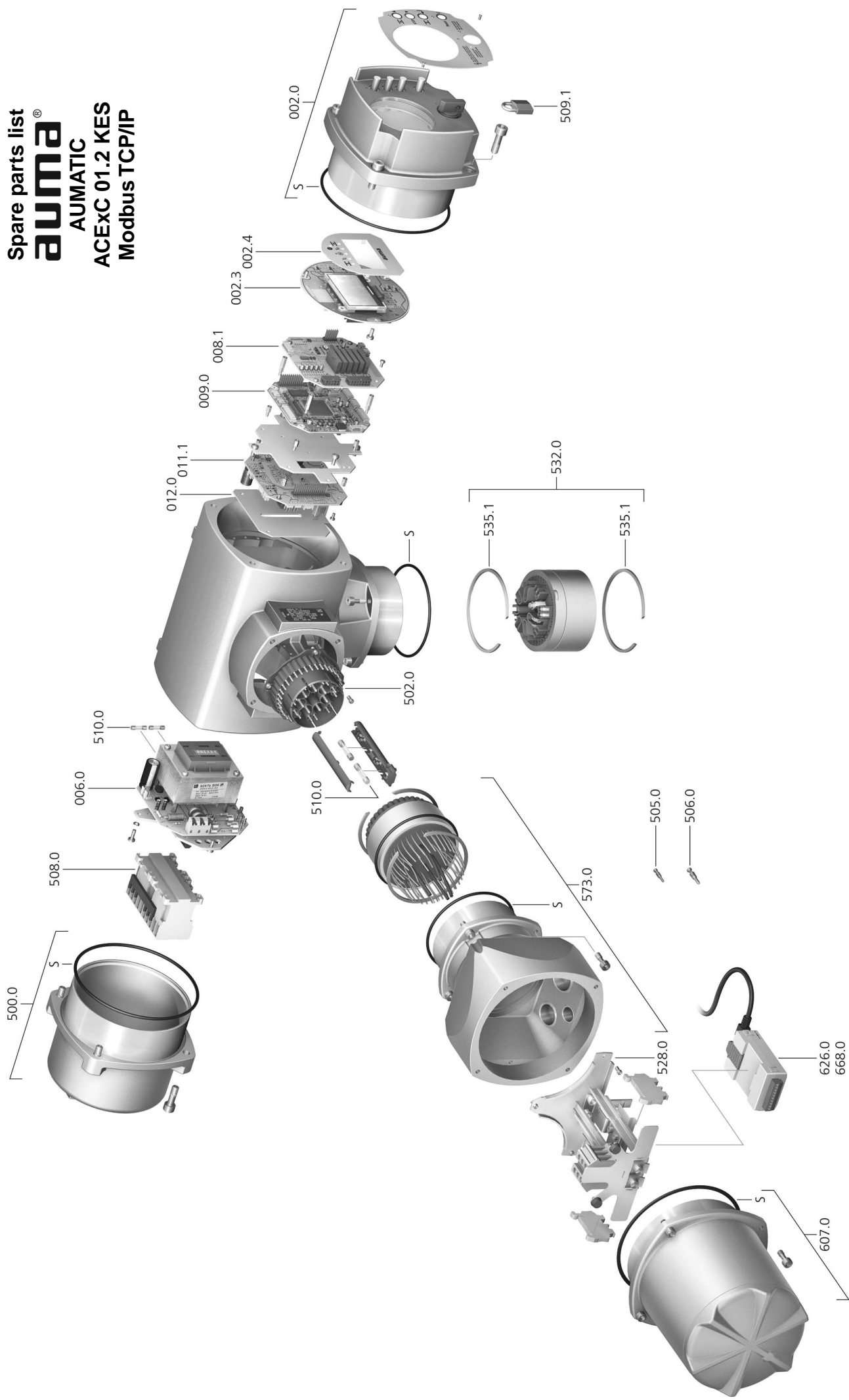


Spare parts list  
**auma**<sup>®</sup>  
 AUMATIC  
 ACExC 01.2 KES  
 Modbus TCP/IP



## Spare parts list AUMATIC Modbus TCP/IP

Please state device type and our order number (see name plate) when ordering spare parts. Only original AUMA spare parts should be used. Failure to use original spare parts voids the warranty and exempts AUMA from any liability. Representation of spare parts may slightly vary from actual delivery.

Ref. no.	Designation	Type
002.0	Local controls	Sub-assembly
002.3	Local controls board	Sub-assembly
002.4	Face plate for display	
006.0	Power supply unit	Sub-assembly
008.1	I/O board	
008.1	Fieldbus board	Sub-assembly
009.0	Logic board	Sub-assembly
011.1	Relay board	Sub-assembly
012.0	Option board	
500.0	Cover	Sub-assembly
502.0	Pin carrier without pins	
505.0	Pin for controls	
506.0	Pin for motor	Sub-assembly
508.0	Switchgear	Sub-assembly
509.1	Padlock	
510.0	Fuse kit	Sub-assembly
528.0	Terminal frame (without terminals)	Sub-assembly
532.0	Cable conduit (actuator connection)	Sub-assembly
535.1	Snap ring	
573.0	Ex plug/socket connector with terminal blocks (KES)	Sub-assembly
607.0	Cover	
626.0	Modbus TCP/IP gateway	
668.0	EtherNet/IP gateway	
S	Seal kit	Set