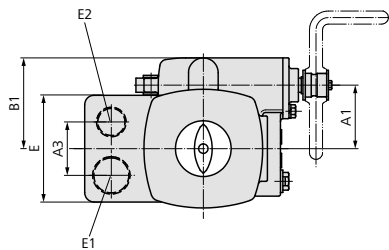
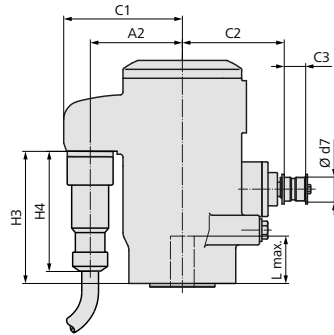
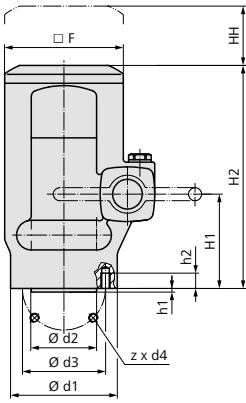
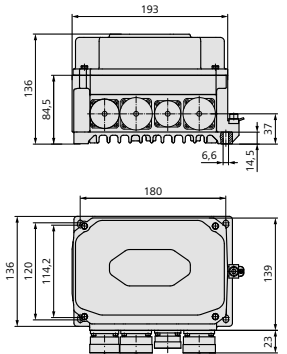
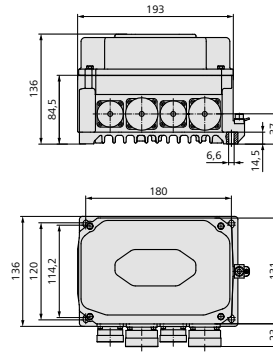


Dimensions Part-turn actuators with MEC 03.1 actuator controls



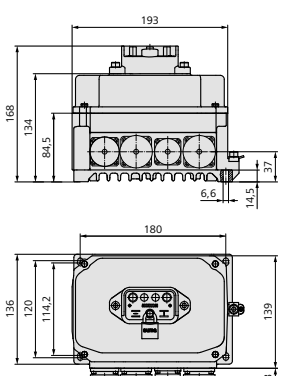
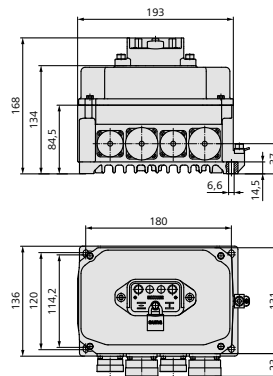
MEC 03.1 actuator controls



2x plug/socket connector, 5 poles
2x plug/socket connector, 17 poles

2x plug/socket connector, 5 poles
1x plug/socket connector, 17 poles
1x plug/socket connector, 19 poles

MEC 03.1 actuator controls with local controls



2x plug/socket connector, 5 poles
2x plug/socket connector, 17 poles

2x plug/socket connector, 5 poles
1x plug/socket connector, 17 poles
1x plug/socket connector, 19 poles

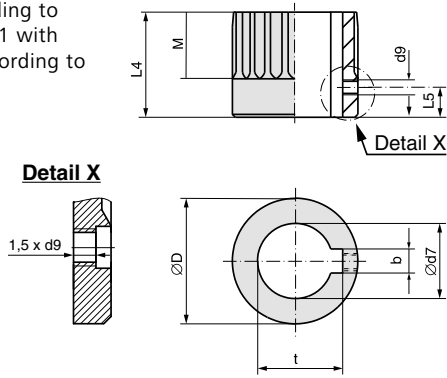
Valve attachment according to EN ISO 5211.
Dimensions of couplings see overleaf
For operation elements according to VG 85 081,
refer to separate dimension sheet

Dimensions	SG 04.2	SG 05.2	SG 07.2	SG 10.2
EN ISO 5211	F07	F07	F07	F10
A1	42	54	67	83
A2	65	78	90	106
A3	39	45	45	45
B1	63	77	95	111
C1	87	100	113	129
C2	76	86	110	117
C3	18	18	18	18
Ø d7		W 20 x 0.6 x 0.32 x 8f DIN 5480		
E	80	90	92	92
E1		Plug/socket connector, 17 poles		
E2		Plug/socket connector, 5 poles		
F	80	100	123	154
H1	74	80	99	111
H2	170	188	225	253
H3	102	112	143	170
H4	92	92	92	92
HH	50	50	50	70
Ø d1	90	90	90	125
Ø d2 f8	55	55	55	70
Ø d3	70	70	70	102
d4	M8	M8	M8	M10
h1	3	3	3	3
h2	13	13	13	16
L max.	40	40	50	60
z	4	4	4	4

We reserve the right to alter data according to improvements made. Previous documents become invalid with the issue of this document.

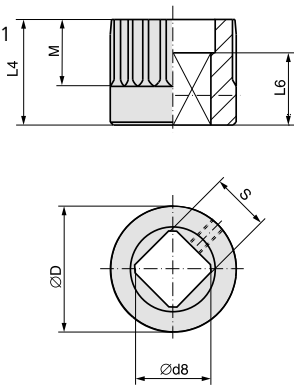
Dimensions Couplings according to EN ISO 5211

Bore according to EN ISO 5211 with keyway according to DIN 6885-1



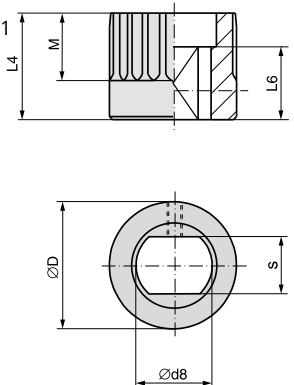
Dimensions	SG 04.2	SG 05.2	SG 07.2	SG 10.2
EN ISO 5211	F07	F07	F07	F10
Ø D	24.8	31.75	41.75	51.75
b JS9 ¹⁾	5	6	6	8
Ø d7 H8 ²⁾	14	18	22	28
Ø d7 max.	15	20	25,4	38
d9 ³⁾	M4	M4	M5	M6
L4	35	35	35	45
L5 ³⁾	8	8	8	10
M	17	20	20	35
t ¹⁾	16.3	20.8	24.8	31.3

Square bore according to EN ISO 5211



Dimensions	SG 04.2	SG 05.2	SG 07.2	SG 10.2
EN ISO 5211	F07	F07	F07	F10
Ø D	24,8	31,75	41,75	51,75
Ø d8 ²⁾	14.1	18.1	22.2	28.2
Ø d8 max.	18.1	22.2	28.2	40.2 ⁴⁾
L4	35	35	35	45
L6 min.	30	30	30	30
M	17	20	20	35
s H11 ²⁾	11	14	17	22
s H11 max.	14	17	22	30 ⁴⁾

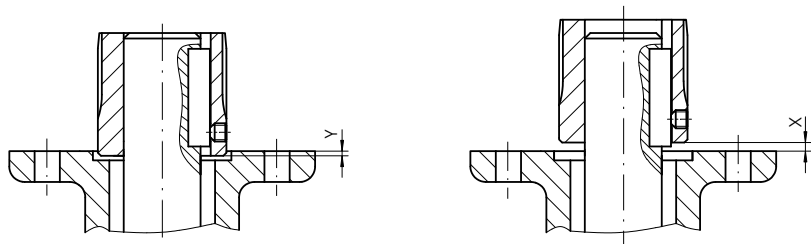
Two-flat according to EN ISO 5211



Dimensions	SG 04.2	SG 05.2	SG 07.2	SG 10.2
EN ISO 5211	F07	F07	F07	F10
Ø D	24.8	31.75	41.75	51.75
Ø d8 ²⁾	14.1	18.1	22.2	28.2
Ø d8 max.	18.1	22.2	28.2	36.2
L4	35	35	35	45
L6 min.	25	25	25	25
M	17	20	20	35
s H11 ²⁾	11	14	17	22
s H11 max.	14	17	22	27

Mounting position of the coupling within fitting dimensions according to AUMA definition

X max.	3	2.5	2.5	3.5
Y max.	5	6	6	10



1) Dimensions depend on Ø d7, refer to DIN 6885-1

2) Recommended size according to EN ISO 5211

3) Thread with grub screw

4) According to DIN 79