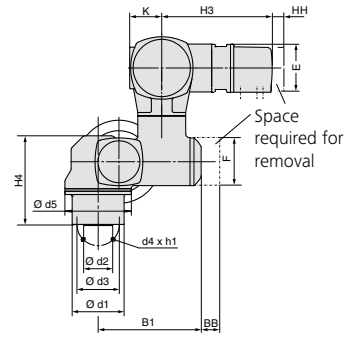
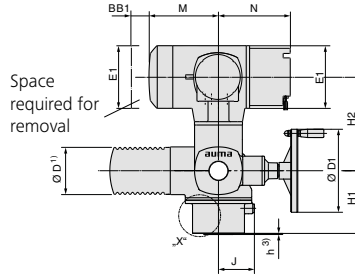
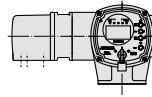
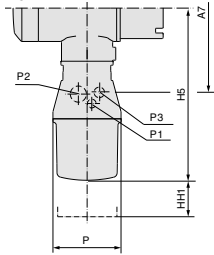


Dimensions Part-turn actuators with ACExC integral actuator controls (also for Fieldbus & HART)

With AUMA 3-phase motor and explosion-proof plug/socket connector

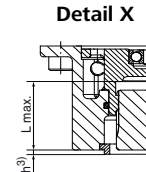
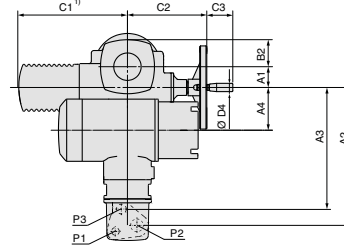
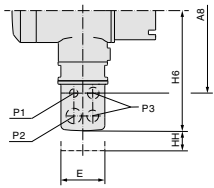
Option KS (KES):

Plug/socket connector with terminal blocks



Option KH (KPH):

Plug/socket connector with screw-type terminals



- 1) Exact dimension depending on motor used
- 2) Standard, other threads on request
- 3) Allowance for spigot is not available as standard. The spigot ring is a separate component, available as option.
- 4) Combined flange F05/F07 without spigot (standard). As an alternative an individual flange F07 can be ordered with/without spigot

Standard KP:

Plug/socket connector with screw-type terminals

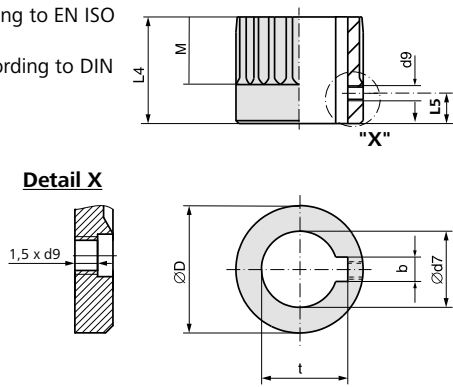
Output drives according to EN ISO 5211
For dimensions see overleaf

Dimensions	SQEx 05.2/ACExC 01.2		SQEx 07.2/ACExC 01.2		SQEx 10.2/ACExC 01.2		SQEx 12.2/ACExC 01.2		SQEx 14.2/ACExC 01.2			
	EN ISO 5211	F05 ⁴⁾	F07 ⁴⁾	F05 ⁴⁾	F07 ⁴⁾	F10	F12	F12	F14	F14	F16	
A1			40				50		50		50	
A2			334				334		334		334	
A3			294				294		294		294	
A4			103				103		103		103	
A7			287				287		287		287	
A8			320				320		320		320	
B1			245				255		255		255	
B2			50				65		65		65	
C1 ¹⁾			268				268		268		268	
C2			186				191		191		191	
C3			63				63		63		63	
Ø D ¹⁾			104				104		104		104	
Ø D1			160				200		200		200	
Ø D4			20				20		20		20	
E			115				115		115		115	
E1			154				154		154		154	
F			115				115		115		115	
H1		134		134	160	151	183	175	215	210	260	
H2			235				235		235		235	
H3			267				267		267		267	
H4		193		193	218	214	246	238	278	273	323	
H5			404				404		404		404	
H6			292				292		292		292	
J			69				86		109		128	
K			78				78		78		78	
L max.		40		40	66	50	82	61	101	75	125	
M			199				199		199		199	
N			171				171		171		171	
P			150				150		150		150	
P1 ²⁾			M20 x 1.5				M20 x 1.5		M20 x 1.5		M20 x 1.5	
P2 ²⁾			M32 x 1.5				M32 x 1.5		M32 x 1.5		M32 x 1.5	
P3 ²⁾			M25 x 1.5				M25 x 1.5		M25 x 1.5		M25 x 1.5	
BB min.			180				180		180		180	
BB1 min.			75				75		75		75	
HH min.			60				60		60		60	
HH1 min.			130				130		130		130	
Ø d1		90		90	125	125	150	150	175	175	210	
Ø d2		–		–	70	70	85	85	100	100	130	
Ø d3		50	70	50	70	102	125	125	140	140	165	
d4		4 x M6	4 x M8	4 x M6	4 x M8	4 x M10	4 x M10	4 x M12	4 x M16	4 x M16	4 x M20	
Ø d5			125				160		210		225	
h ³⁾		–		–	2.5		2.5		2.5	3.5	4.5	
h1		12	15	12	15	16	18	19	22	25	29	32

We reserve the right to alter data according to improvements made. Previous documents become invalid with the issue of this document.

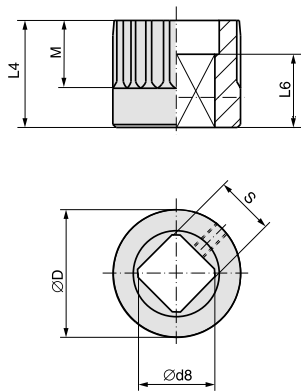
Dimensions Couplings according to EN ISO 5211

Bore according to EN ISO 5211 with keyway according to DIN 6885-1



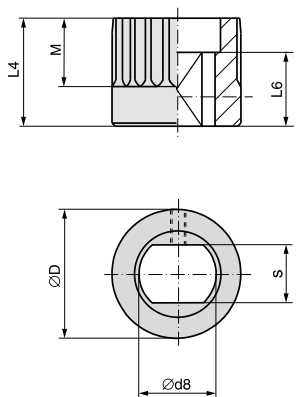
SQ../SQR..	05.2		07.2		10.2		12.2		14.2	
EN ISO 5211	F05	F07	F07	F10	F10	F12	F12	F14	F14	F16
Ø D	41.75	41.75	41.75	51.75	51.75	67.6	67.6	81.6	81.6	81.6
b JS9 ¹⁾	6	6	6	8	8	10	10	14	14	14
Ø d7 H8 ²⁾	18	22	22	28	28	36	36	48	48	48
Ø d7 max.	25.4	25.4	25.4	38	38	50	50	60	60	60
d9 ³⁾	M5	M5	M5	M6	M6	M6	M6	M6	M6	M6
L4	35	35	60	45	75	55	95	65	115	115
L5 ³⁾	8	8	8	10	10	10	10	10	10	10
M	20	20	20	30	30	40	40	47	47	40
t ¹⁾	20.8	24.8	24.8	31.3	31.3	39.3	39.3	51.8	51.8	51.8

Square bore according to EN ISO 5211



SQ../SQR..	05.2		07.2		10.2		12.2		14.2	
EN ISO 5211	F05	F07	F07	F10	F10	F12	F12	F14	F14	F16
Ø D	41.75	41.75	41.75	51.75	51.75	67.6	67.6	81.6	81.6	81.6
Ø d8 min. ²⁾	18.1	22.2	22.2	28.2	28.2	36.2	36.2	48.2	48.2	48.2
Ø d8 max.	28.2	28.2	28.2	40.2 ⁴⁾	40.2 ⁴⁾	48.2	48.2	60.2	60.2	60.2
L4	35	35	60	45	75	55	95	65	115	115
L6 min.	30	30	30	30	30	30	30	40	40	40
M	20	20	20	30	30	40	40	47	47	40
s H11 ²⁾	14	17	17	22	22	27	27	36	36	36
s H11 max.	22	22	22	30 ⁴⁾	30 ⁴⁾	36	36	46	46	46

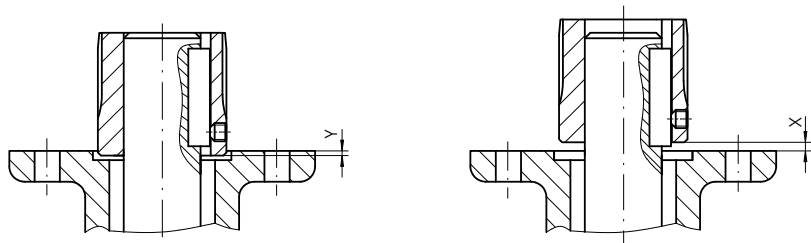
Two-flat according to EN ISO 5211



SQ../SQR..	05.2		07.2		10.2		12.2		14.2	
EN ISO 5211	F05	F07	F07	F10	F10	F12	F12	F14	F14	F16
Ø D	41.75	41.75	41.75	51.75	51.75	67.6	67.6	81.6	81.6	81.6
Ø d8 min. ²⁾	18.1	22.2	22.2	28.2	28.2	36.2	36.2	48.2	48.2	48.2
Ø d8 max.	28.2	28.2	28.2	36.2	36.2	48.2 (48 ⁵⁾)	48.2 (48 ⁵⁾)	60.2	60.2	60.2
L4	35	35	60	45	75	55	95	65	115	115
L6 min.	25	25	25	25	25	30	30	40	40	40
M	20	20	20	30	30	40	40	47	47	40
s H11 ²⁾	14	17	17	22	22	27	27	36	36	36
s H11 max.	22	22	22	27	27	36 (41 ⁵⁾)	36 (41 ⁵⁾)	46	46	46

Mounting position of the coupling within fitting dimensions according to AUMA definition

X max.	3	4	5	8
Y max.	2	5	10	10



- 1) Dimensions depend on Ø d7, refer to DIN 6885-1
- 2) Recommended size according to EN ISO 5211
- 3) Thread with grub screw
- 4) According to DIN 79
- 5) According to DIN 475

We reserve the right to alter data according to improvements made. Previous documents become invalid with the issue of this document.