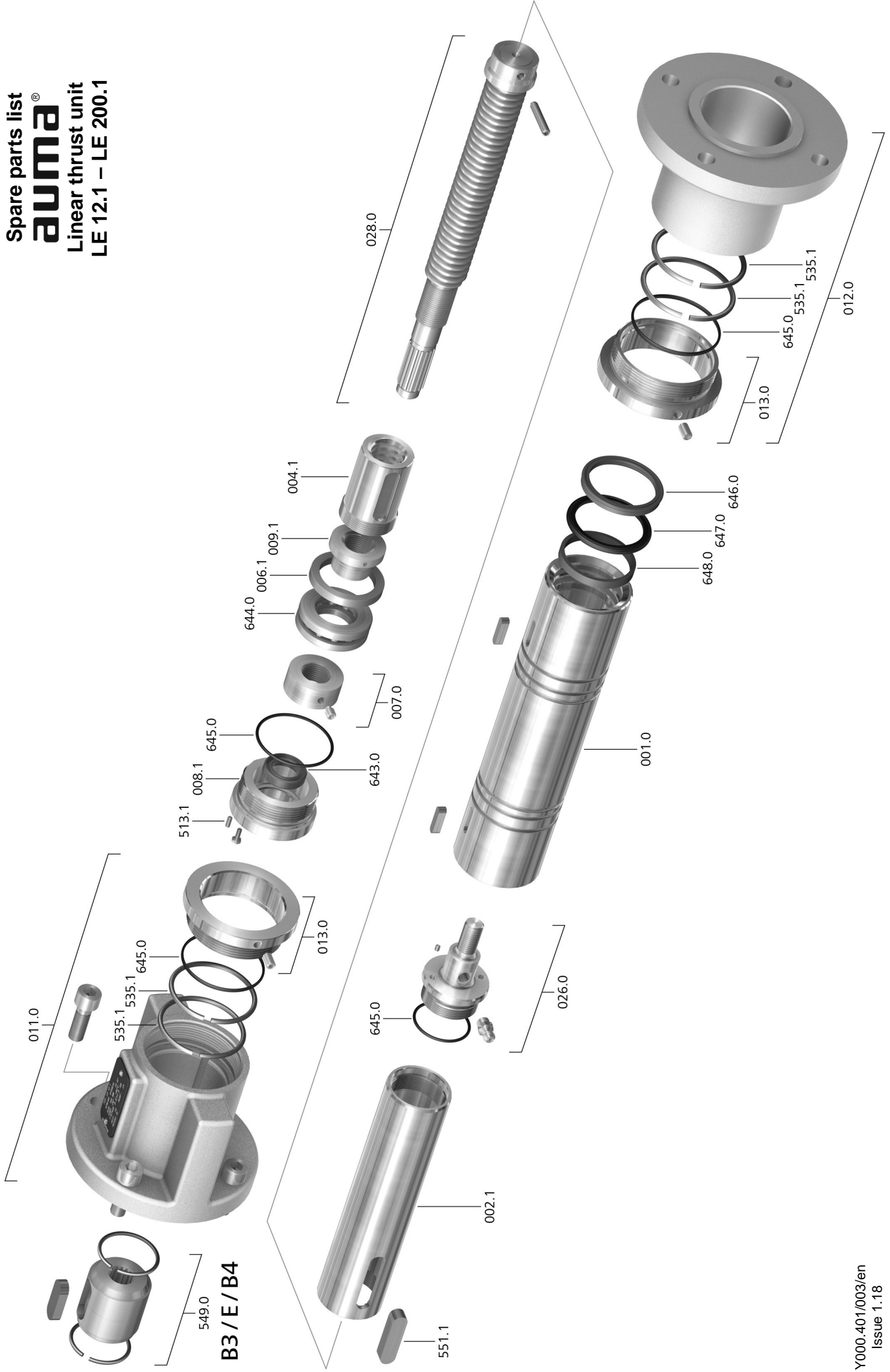


Spare parts list  
**auma**<sup>®</sup>  
 Linear thrust unit  
 LE 12.1 – LE 200.1



## Spare parts list Linear thrust unit

Please state device type and our order number (see name plate) when ordering spare parts. Only original AUMA spare parts should be used. Failure to use original spare parts voids the warranty and exempts AUMA from any liability. Representation of spare parts may slightly vary from actual delivery.

No.	Designation	Type
001.0	Outer tube	
002.1	Inner tube	
004.1	Nut	
006.1	Support washer	
007.0	Ring nut	Sub-assembly
008.1	Barrel nut	
009.1	Bearing bush	
011.0	Actuator flange	Sub-assembly
012.0	Mounting flange	Sub-assembly
013.0	Locking nut	Sub-assembly
026.0	Coupling stud	Sub-assembly
028.0	Stem	Sub-assembly
513.1	Grub screw	
535.1	Snap ring	
549.0	Output drive type B3/B4/E	Sub-assembly
551.1	Parallel key	
643.0	Radial seal	
644.0	Axial deep groove ball bearing	
645.0	O-ring	
646.0	Wiper ring	
647.0	Sealing ring	
648.0	Guide ring	