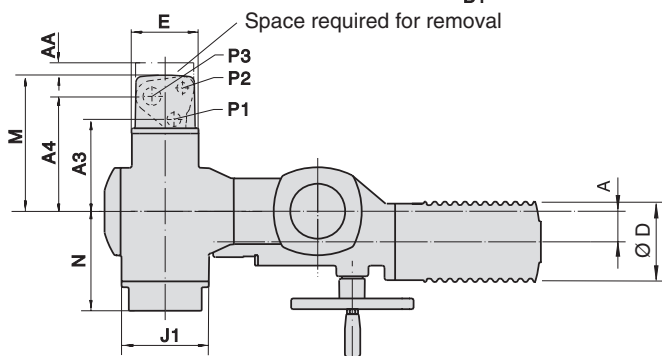
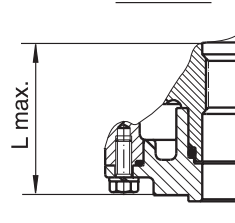


Detail X



Valve attachment according to EN ISO 5211  
Dimensions of couplings see next page

- 1) 3ph AC-Motor
- 2) Special 1ph AC-motor and DC motor (Both not suitable for SGR modulating proposes!)
- 3) Standard, other threads on request
- 4) Precise dimension, depending on the AUMA MATIC version

Dimensions	EN ISO 5211	A	A3	A4	AA min.	B1	B2	B3 <sup>1)</sup>	B4 <sup>2)</sup>	C <sup>4)</sup>	Ø D	Ø D1	Ø D2	Ø D3	E	F	G	H	J
SG(R) 05.1/AM	F05	40	159	199	30	101	137	190	274	337	105	160	40	20	115	115	128	275	50
SG(R) 07.1/AM	F07																		
SG(R) 10.1/AM	F10	63	159	199	30	111	172	190	274	347	105	160	40	20	115	150	153	291	56
SG(R) 12.1/AM	F12	80	159	199	30	111	172	190	274	347	105	160	40	20	115	150	170	313	70

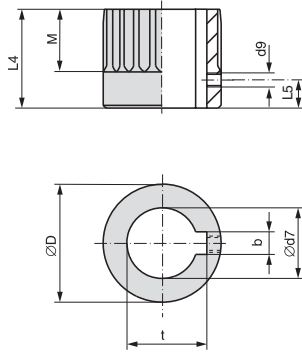
Dimensions	J1	K	L max.	L1	M	N	P1 <sup>3)</sup>	P2 <sup>3)</sup>	P3 <sup>3)</sup>	R	T	U	Z	Ø d1	Ø d2	Ø d3	d4	h	h1
SG(R) 05.1/AM	150	170	60	63	235	171	M25x1.5	M20x1.5	M32x1.5	232	45	150	32	90	-	50	M6	-	9.5
SG(R) 07.1/AM															55	70	M8	3	13
SG(R) 10.1/AM	150	170	80	63	235	171	M25x1.5	M20x1.5	M32x1.5	242	55	150	32	125	70	102	M10	3	17
SG(R) 12.1/AM	150	192	100	63	235	171	M25x1.5	M20x1.5	M32x1.5	242	55	150	32	150	85	125	M12	3	20

We reserve the right to alter data according to improvements made. Previous documents become invalid with the issue of this document.

**SG 05.1 – SG 12.1**  
**SGR 05.1 – SGR 12.1**  
**AM 01.1**

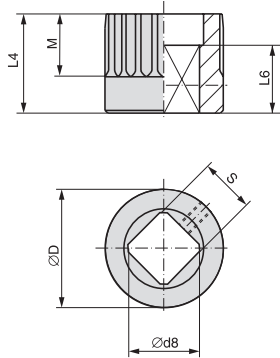
**Dimensions coupling according to** **EN ISO 5211**  
**DIN 6885**

Bore acc. to EN ISO 5211  
 with keyway acc. to  
 DIN 6885 P1

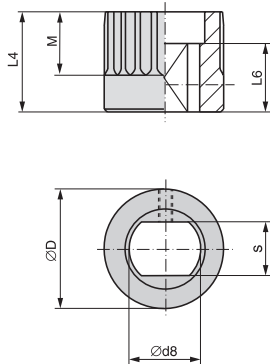


Type	SG(R) 05.1/AM	SG(R) 07.1/AM	SG(R) 10.1/AM	SG(R) 12.1/AM
EN ISO 5211	F05	F07	F10	F12
Ø D	41.75		51.75	67.6
b JS9 <sup>1)</sup>	6		8	10
Ø d7 H8 <sup>2)</sup>	18	22	28	36
Ø d7 max.	25.4		38	50
d9 <sup>3)</sup>	M5		M6	M6
L 4	40		65	75
L 5 <sup>3)</sup>	8		10	18
M	20		35	40
t <sup>1)</sup>	20.8	24.8	31.3	39.3
Ø D	41.75		51.75	67.6
Ø d8 min. <sup>2)</sup>	18.1	22.2	28.2	36.2
Ø d8 max.	28.2		40.2 <sup>4)</sup>	48.2
L 4	40		65	75
L 6 min.	30		30	30
M	20		35	40
s H11 <sup>2)</sup>	14	17	22	27
s H11 max.	22		30 <sup>4)</sup>	36
Ø D	41.75		51.75	67.6
Ø d8 min. <sup>2)</sup>	18.1	22.2	28.2	36.2
Ø d8 max.	28.2		36.2	48.2/48 <sup>5)</sup>
L 4	40		65	75
L 6 min.	25		25	30
M	20		35	40
s H11 <sup>2)</sup>	14	17	22	27
s H11 max.	22		27	36/41 <sup>5)</sup>
X max.	9		15	25
Y max.	—		9	—

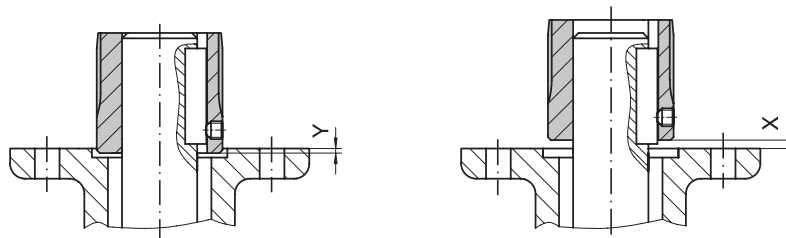
Square bore acc. to EN ISO 5211



Bore with two-flats acc. to EN ISO 5211



Mounting position of coupling



<sup>1)</sup> Dimensions depend on Ø d7, refer to DIN 6885 P1  
<sup>2)</sup> Recommended size according to EN ISO 5211  
<sup>3)</sup> Thread and grub screw  
<sup>4)</sup> according to DIN 79  
<sup>5)</sup> according to DIN 475

We reserve the right to alter data according to improvements made. Previous documents become invalid with the issue of this document.