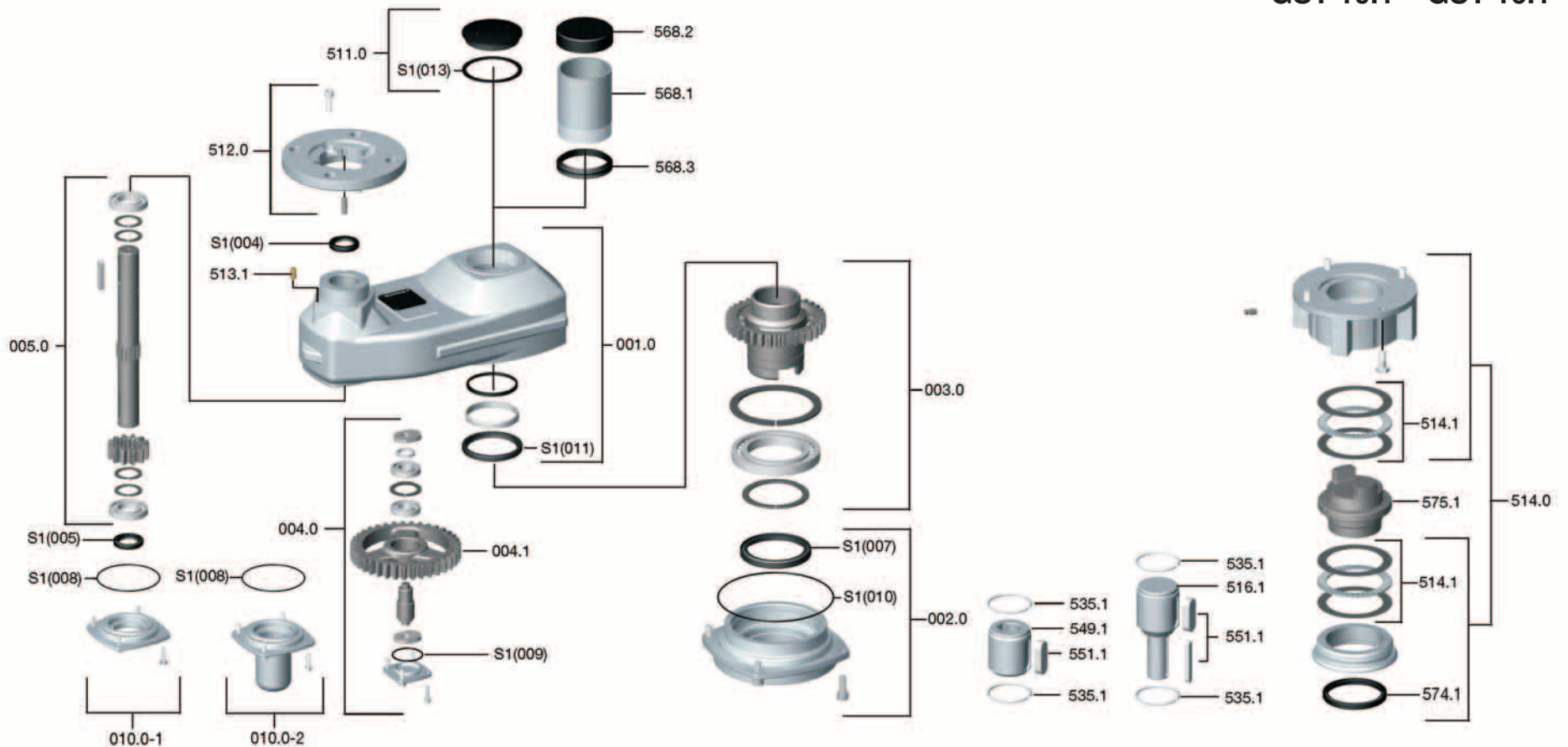


Spare parts list
auma[®]
 Spur gearboxes
 GST 10.1 – GST 16.1



Please state type and commission no. of the device (see name plate) when ordering spare parts. Only original AUMA spare parts should be used. Failure to use original spare parts voids the warranty and exempts AUMA from any liability. Delivered spare parts may slightly vary from the representation.

No.	Designation	Type
001.0	Housing	Sub-assembly
002.0	Bearing flange	Sub-assembly
003.0	Hollow shaft	
004.0	Intermediate stage	Sub-assembly
004.1	Intermediate wheel	
005.0	Input shaft	Sub-assembly
010.0-1	Input shaft bearing flange	Sub-assembly
010.0-2	Input shaft bearing flange with protection cover	Sub-assembly
511.0	Screw plug	Sub-assembly
512.0	Flange for actuator	Sub-assembly
513.1	Grub screw	
514.0	Output drive form A (without stem nut)	Sub-assembly
514.1	Axial needle roller bearing	Sub-assembly
516.1	Output drive shaft D	
535.1	Snap ring	
549.1	Output socket B3/B4/E	
551.1	Parallel key	
568.1	Stem protection tube (without cap)	
568.2	Cap for stem protection tube	
568.3	V-seal	
574.1	Radial seal output drive A for ISO flange	
575.1	Stem nut type A	
S1	Seal kit	Set

We reserve the right to alter data according to improvements made. Previous documents become invalid with the issue of this document.